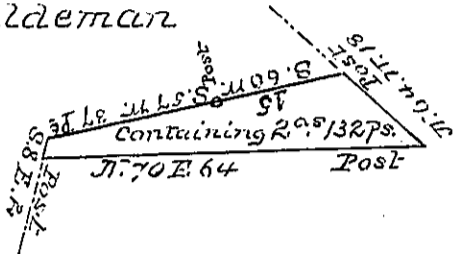


Peter Haldeman



Shorb, Stewart &amp; Co.

Shorb, Stewart &amp; Co.

Draught of Two Acres, and One hundred and thirty two perches, and allowed of Six per cent. Situated in Ferguson Township, Centre County. Surveyed the 1st. day of March 1839, for Abraham Fry in pursuance of his Warrant, bearing date the 29<sup>th</sup> day January 1839, &c.

pt.  
To, John Taylor Esq.  
Sur. Gen. l. Pa.

Jos. F. Quay. D.S.

IN TESTIMONY that the above is a copy of the original remaining on file in the Department of Internal Affairs of Pennsylvania, made conformably to an Act of Assembly approved the 16th day of February, 1833, I have hereunto set my Hand and caused the Seal of said Department to be affixed at Harrisburg, this

Fourth day of September 1890

*Geo. S. Stewart*  
Secretary of Internal Affairs